



# Antique Football

VINTAGE HELMET GRADING SERVICES



Certificate Number	MCH-UNK-10050
Style Classification	Molded Crown Head Harness
Date of Manufacture	1910 - 1915
Manufacturer	Unknown
Model No.	Unknown
Evaluation Date	10/15/2017
Evaluated By	PCH
Manufacturer's Logo	No
Location	
<b>Material</b>	
Exterior	Dark Brown Leather Shell & Ear Flaps
Interior	Dark Brown Leather
<b>Size</b>	
Adult/Youth	Adult Small/Medium
Hat Size	7

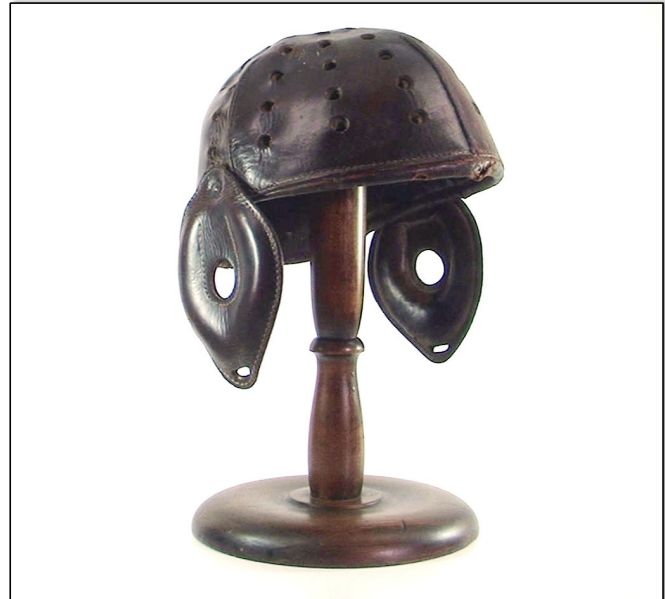
**Description**  
MCH-UNK-10050 is a molded crown head harness manufactured by an unknown manufacturer between 1910 and 1915.

**Provenance**  
None provided

AntiqueFootball makes no representation of condition or AFR Grade beyond the inspection date noted.

Registry QR Code:		AFR	GOOD
		Grade:	74.33

<http://www.helmetregistry.com/helmets/10050.htm>



Inspection Summary				Grading Scale	
Criteria	AFR Score	Grade %	Comp. Grade	Score Range	Grade
Deformation	100.00	40.00%	40.00	95-100	MINT
Exterior Condition	44.50	35.00%	15.58	90 - 95	NEAR MINT
Interior	75.00	25.00%	18.75	85 - 90	EX
<b>Overall Score</b>			<b>74.33</b>	80 - 85	EX - VG
				75 - 80	VERY GOOD
				70 - 75	GOOD
<b>Overall Grade</b>			<b>GOOD</b>	65 - 70	GOOD - FAIR
				60 - 65	FAIR
				< 60	POOR

It is the mission of AntiqueFootball.com to provide accurate, unbiased research to vintage football equipment collectors and to share our passion for the humble beginnings of America's favorite pastime. With 10-years experience in identifying and dating vintage helmets, a library of over 200 vintage football equipment catalogs, and as the creator of the Vintage Football Helmet Classification System, AntiqueFootball is uniquely qualified to evaluate vintage football helmets.



AntiqueFootball, LLC  
2215 Plank Road #170  
Fredericksburg, VA 22401  
(540) 273-7498

I hereby certify that I have completed this vintage football helmet grading evaluation in accordance with the Vintage Helmet Grading Protocol and the Helmet Grading Code of Ethics established by AntiqueFootball.

Name		Certificate is invalid without AF wax seal
P. Chris Hornung		
Signature		
Date	10/15/2017	



# Antique Football

## VINTAGE HELMET GRADING SERVICES



Deformation		Body/Crown						Ear Pads		Deduction	Notes
		Symmetrical			Asymmetrical			Right	Left		
		Longitudinal	Lateral	Vertical	Longitudinal	Lateral	Vertical				
Deformation	Cupping			X			X			0.0	No cupping
	Compression						X	X		0.0	No compression
	Shear	X	X	X						0.0	No shear
<b>Total Deformation Deductions</b>									<b>0.0</b>		

Grading Key: A = Slight; B = Minor; C = Moderate; D = Significant; F = Severe

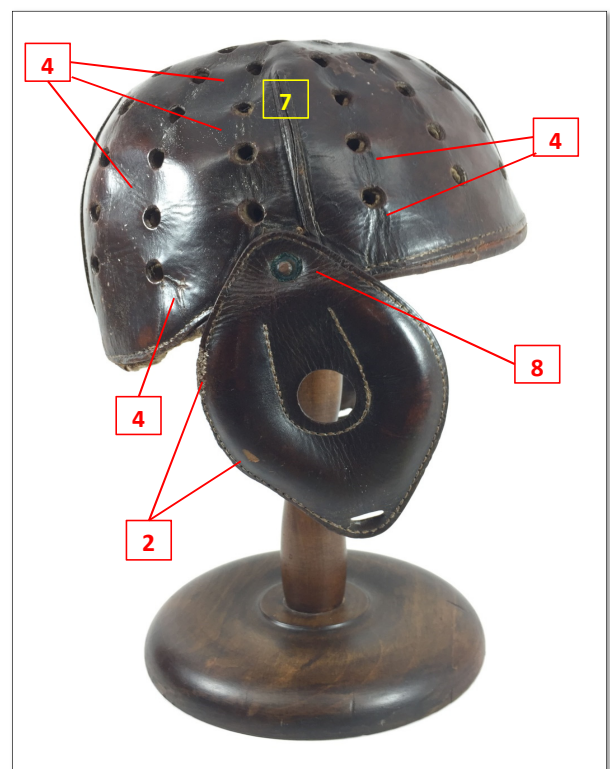
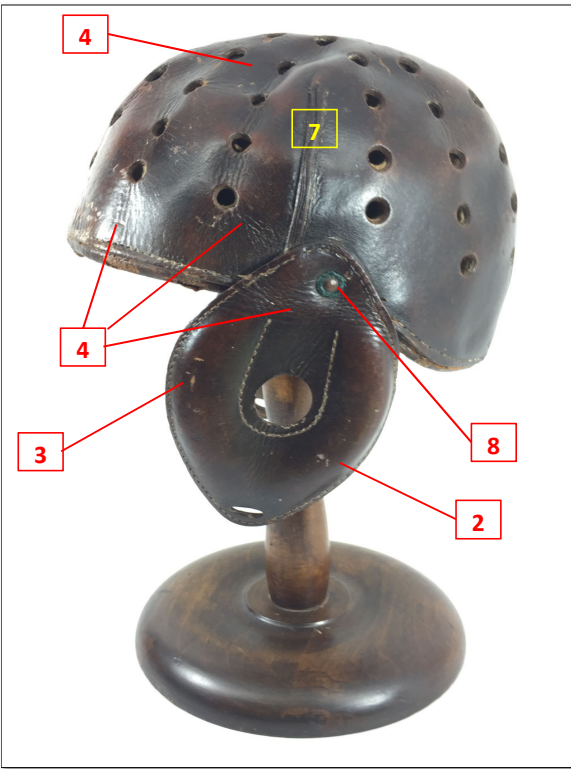
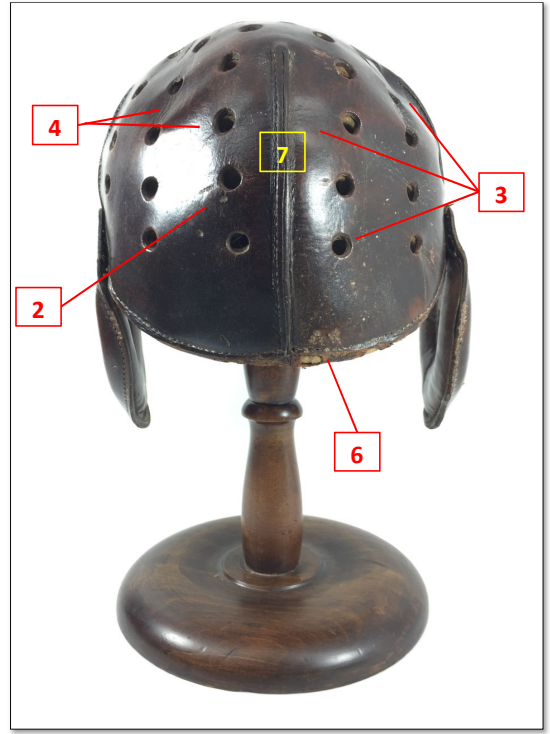
Exterior Condition		Location								Deduction	Notes
		Top	Front	Right Body	Left Body	Right Ear	Left Ear	Rear	Chinstrap		
Wear	Material Loss								F	20.0	1 Missing chinstrap
	Material Repairs									0.0	No material repairs evident
	Insect/Rodent Damage	B	C		C	A	B	A		14.0	2 Slight to moderate rodent chew marks on top, front, left body, rear, and both ear flaps
	Tearing/Fraying									0.0	No tearing/fraying
	Surface Abrasions/Scuffs/Scars					A				1.0	3 Slight scuff on right ear
	<b>Total Wear Deductions</b>									<b>35.0</b>	
Desiccation	Stitch Disintegration/Damage								X	0.0	No stitch damage
	Fat Spews								X	0.0	No fat spews
	Embrittlement									0.0	No embrittlement
	Shrinkage Depressions/Creasing	C	B	C	C	B	B	A		19.0	4 Minor to moderate shrinkage depressions on harness body and ears
	Crazing/Cracking			C	B	C			X	10.0	5 Minor to moderate cracking on right and left body and right ear
	Flaking/Spalling		C					C	X	32.0	6 Moderate flaking along front and rear headband
	Acidic Hydrolysis/Red Rot								X	0.0	No visible rot
<b>Total Desiccation Deductions</b>									<b>61.0</b>		
Discoloration	Oxidation	B	B	B	B	B	B	B	X	7.0	7 Minor oxidation of all exterior leather surfaces
	Chemical Staining									0.0	No chemical staining
	Soiling/Staining									0.0	No soiling/staining
	Applied Treatments/Residue									0.0	No applied treatments/residue
	Foreign Markings									0.0	No foreign markings
	Metal Corrosion/Salt Accretions					C	C			8.0	8 Moderate corrosion of metal rivets on ear flaps
	Microbic Deterioration									0.0	No sign of mold or bacteriological deterioration
<b>Total Discoloration Deductions</b>									<b>15.0</b>		
<b>Total Exterior Condition Deductions</b>									<b>111.0</b>		

Grading Key: A = Slight; B = Minor; C = Moderate; D = Significant; F = Severe



# Antique Football

VINTAGE HELMET GRADING SERVICES





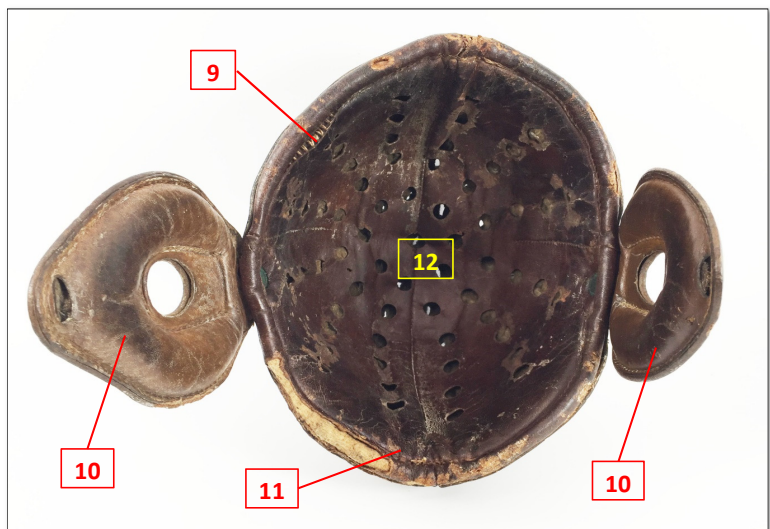
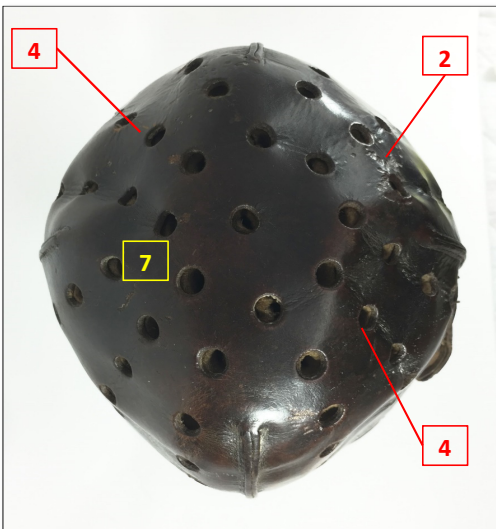
# Antique Football

VINTAGE HELMET GRADING SERVICES



	Interior Condition	Location							Deduction	Notes
		Crown	Front	Right Side	Left Side	Right Ear	Left Ear	Rear		
Shell	Material Loss								0.0	No material loss
	Material Repairs								0.0	No material repairs
	Stitch Disintegration/Damage		B						2.0	9 Loose stitching at left front interior
	Staining/Discoloration					B	B		4.0	10 Minor staining of interior of leather ear flaps
	Insect/Rodent Damage							C	4.0	11 Moderate rodent chew marks on interior rear of harness
	Tearing/Fraying								0.0	No tearing or fraying
	Foreign Markings								0.0	No foreign markings
	Embrittlement								0.0	No embrittlement
	Crazing/Cracking								0.0	No crazing/cracking
	Flaking/Spalling	C	C	C	C			C	40.0	12 Moderate flaking of interior leather shell on all surfaces
	Acidic Hydrolysis/Red Rot								0.0	No evidence of hydrolysis or rot
<b>Total Shell Deductions</b>									<b>50.0</b>	
Padding	Material Loss								0.0	No material loss
	Insect/Rodent Damage								0.0	No insect/rodent damage
	Staining/Discoloration								0.0	No staining/dyscoloration
	Foreign Markings								0.0	No foreign markings
	Odor								0.0	No detectable odor
	<b>Total Padding Deductions</b>									<b>0.0</b>
<b>Total Interior Condition Deductions</b>									<b>50.0</b>	

Grading Key: A = Slight; B = Minor; C = Moderate; D = Significant; F = Severe





# Antique Football

VINTAGE HELMET GRADING SERVICES





### About the Molded Crown Head Harness

In 1903, the Intercollegiate Football Association banned the use of sole leather in football helmets. In response, some manufacturers shifted production to soft raincap and flattop head harnesses. The Molded Crown Head Harness was similar in design to the raincap style, but utilized a more rigid, bowl-shaped molded leather crown. The process for molding leather involves immersing the material in water, stretching it over a mold form, and allowing it to dry and stiffen in the shape of the mold. The resulting molded crown head harnesses were stiffer than raincap models, but less rigid than banned sole leather models. Molded crown head harnesses possess independent ear flaps that are sewn or riveted to the body, and cotton or wool padding on the interior of the helmet.

### Distinguishing Characteristics

