



Antique Football

VINTAGE HELMET GRADING SERVICES



Certificate Number	FHS-HPG-10083
Style Classification	Harvard Flattop Head Harness
Date of Manufacture	1918-1920
Manufacturer	Horace Partridge
Model No.	No. 233M
Evaluation Date	5/10/2018
Evaluated By	PCH
Manufacturer's Logo	Yes
Location	Embossed on Left Rear
Material	
Exterior	Dark Brown Leather
Interior	White Felt
Size	
Adult/Youth	
Hat Size	

Description
 FHS-HPG-10083 is a Horace Partridge No. 233M 1st Generation Harvard Flattop Head Harness constructed of dark brown leather between 1918 and 1920.

Provenance

AntiqueFootball makes no representation of condition or AFR Grade beyond the inspection date noted.

Registry QR Code:		AFR Grade:	EX-VG
			80.34

<http://www.helmetregistry.com/helmets/10083.htm>



Inspection Summary				Grading Scale	
Criteria	AFR Score	Grade %	Comp. Grade	Score Range	Grade
Deformation	90.00	40.00%	36.00	95-100	MINT
Exterior Condition	60.25	35.00%	21.09	90 - 95	NEAR MINT
Interior	93.00	25.00%	23.25	85 - 90	EX
Overall Score			80.34	80 - 85	EX - VG
				75 - 80	VERY GOOD
				70 - 75	GOOD
Overall Grade			EX-VG	65 - 70	GOOD - FAIR
				60 - 65	FAIR
				< 60	POOR

It is the mission of AntiqueFootball.com to provide accurate, unbiased research to vintage football equipment collectors and to share our passion for the humble beginnings of America's favorite pastime. With 10-years experience in identifying and dating vintage helmets, a library of over 200 vintage football equipment catalogs, and as the creator of the Vintage Football Helmet Classification System, AntiqueFootball is uniquely qualified to evaluate vintage football helmets.



AntiqueFootball, LLC
 2215 Plank Road #170
 Fredericksburg, VA 22401
 (540) 273-7498

I hereby certify that I have completed this vintage football helmet grading evaluation in accordance with the Vintage Helmet Grading Protocol and the Helmet Grading Code of Ethics established by AntiqueFootball.

Name		Certificate is invalid without AF wax seal
P. Chris Hornung		
Signature		
Date	5/10/2018	



Antique Football

VINTAGE HELMET GRADING SERVICES



Deformation		Body/Crown						Ear Pads		Deduction	Notes
		Symmetrical			Asymmetrical			Right	Left		
		Longitudinal	Lateral	Vertical	Longitudinal	Lateral	Vertical				
Deformation	Cupping			X			X			0.0	No cupping
	Compression						X	X		0.0	No compression
	Shear	X	X	X		B				10.0	1 Asymmetrical lateral shear of helmet body
Total Deformation Deductions									10.0		

Grading Key: A = Slight; B = Minor; C = Moderate; D = Significant; F = Severe

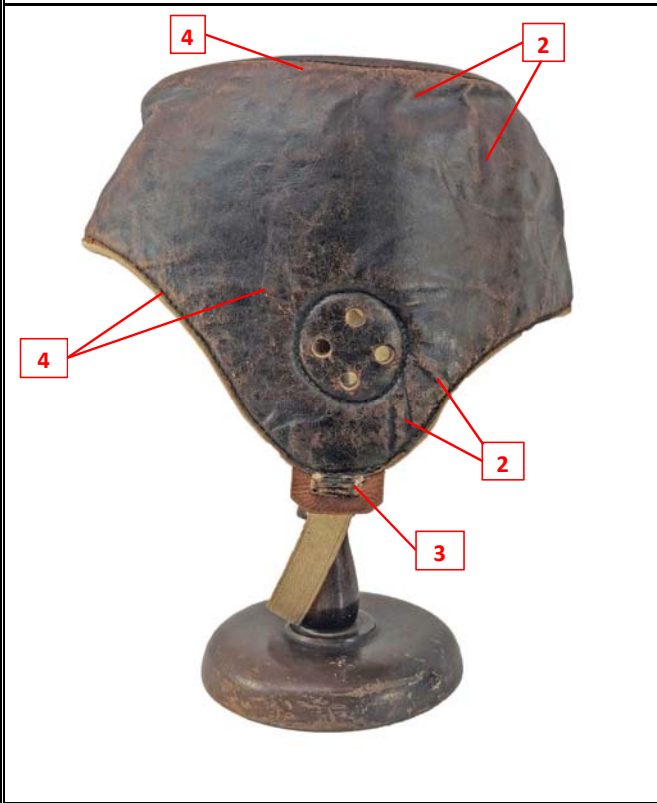
Exterior Condition		Location								Deduction	Notes
		Top	Front	Right Body	Left Body	Right Ear	Left Ear	Rear	Chinstrap		
Wear	Material Loss									0.0	No material loss
	Material Repairs									0.0	No material repairs
	Insect/Rodent Damage									0.0	No insect/rodent damage
	Tearing/Fraying									0.0	No tearing/fraying
	Surface Abrasions/Scuffs/Scars	B								2.0	2 Minor abrasions to top of helmet
	Total Wear Deductions									2.0	
Desiccation	Stitch Disintegration/Damage							X		0.0	No stitch damage
	Fat Spews							X		0.0	No fat spews
	Embrittlement								X	0.0	Embrittlement deductions superseded by flaking/spalling deductions
	Shrinkage Depressions/Creasing		C	A	A	B	B	B	B	13.0	3 Slight to moderate shrinkage depressions on all helmet surfaces other than top, minor cracking of strap ends
	Crazing/Cracking								X	0.0	No crazing or cracking
	Flaking/Spalling	B	C	B	B	B	B	B	X	64.0	4 Minor flaking on all surfaces, moderate flaking on front of helmet
	Acidic Hydrolysis/Red Rot								X	0.0	No visible rot
Total Desiccation Deductions									77.0		
Discoloration	Oxidation							X		0.0	No oxidation
	Chemical Staining									0.0	No chemical staining
	Soiling/Staining							A		0.5	5 Slight soiling of chinstrap
	Applied Treatments/Residue									0.0	No evidence of applied treatments
	Foreign Markings									0.0	No foreign markings
	Metal Corrosion/Salt Accretions									0.0	No metal corrosion
	Microbic Deterioration									0.0	No sign of mold or bacteriological deterioration
	Total Discoloration Deductions									0.5	
Total Exterior Condition Deductions									79.5		

Grading Key: A = Slight; B = Minor; C = Moderate; D = Significant; F = Severe



Antique Football

VINTAGE HELMET GRADING SERVICES





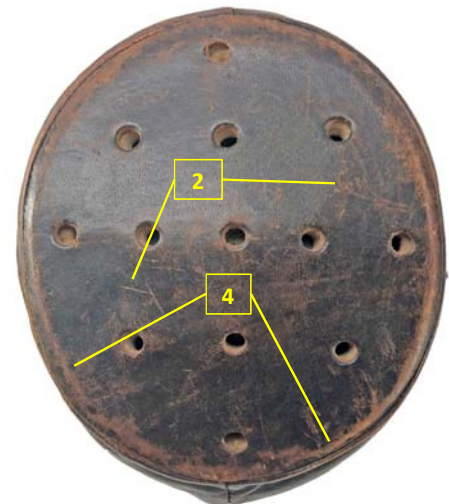
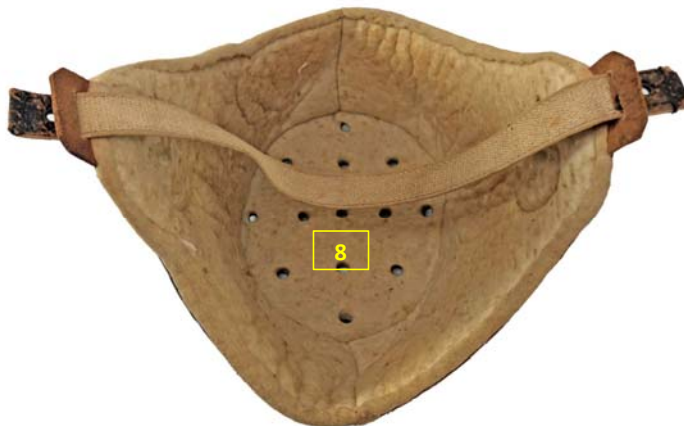
Antique Football

VINTAGE HELMET GRADING SERVICES



Interior Condition		Location							Deduction	Notes
		Crown	Front	Right Side	Left Side	Right Ear	Left Ear	Rear		
Shell	Material Loss								0.0	No material loss
	Material Repairs								0.0	No material repairs
	Stitch Disintegration/Damage								0.0	No stitch damage
	Staining/Discoloration								0.0	No staining/discoloration
	Insect/Rodent Damage								0.0	No insect/rodent damage
	Tearing/Fraying								0.0	No tearing or fraying
	Foreign Markings								0.0	No foreign markings
	Embrittlement								0.0	No embrittlement
	Crazing/Cracking								0.0	No cracking/crazing
	Flaking/Spalling								0.0	No flaking/spalling
	Acidic Hydrolysis/Red Rot								0.0	No evidence of hydrolysis or rot
	Total Shell Deductions								0.0	
Padding	Material Loss								0.0	No material loss
	Insect/Rodent Damage								0.0	No insect/rodent damage
	Staining/Discoloration	B	B	B	B	B	B	B	14.0	6 Minor staining of all interior felt padding
	Foreign Markings								0.0	No foreign markings
	Odor								0.0	No odor
Total Padding Deductions								14.0		
Total Interior Condition Deductions								14.0		

Grading Key: A = Slight; B = Minor; C = Moderate; D = Significant; F = Severe





Antique Football

VINTAGE HELMET GRADING SERVICES





Antique Football

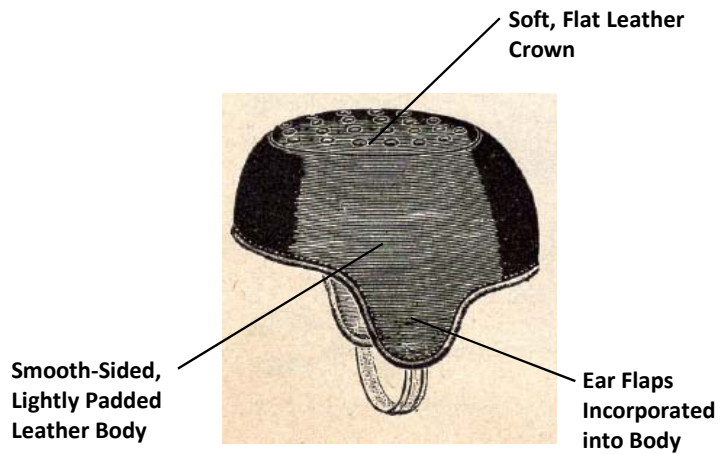
VINTAGE HELMET GRADING SERVICES



About the Harvard Flattop Head Harness

In 1915, A.G. Spalding, Wright & Ditson, and Reach each began manufacturing leather flattop top football helmets commonly referred to as the "Harvard-style," being the style preferred by the Harvard Crimson. While this term did not appear in catalogs until the mid-1920's, each of the manufacturers named their model the No. H or the No. 1-H, with the H presumably referring to Harvard. The Harvard was a lightweight all-leather helmet constructed out of three pieces of leather, one for either side of the helmet and a third to form a flat top. By the mid-1920's, "Improved Harvard Head Harnesses," which added two pieces of reinforcing leather longitudinally and laterally across the top of the crown replaced earlier Harvard styles.

Distinguishing Characteristics



No. 233M

No. 233M. This helmet was designed by Mr. Paul Withington, Harvard College. Made of soft black pliable leather, well padded and ventilated. The ear pads are a continuation of the helmet itself, making it impossible to tear them off. Extends low on the forehead, and also has special back extension protecting base of brain. Each, **\$7.00**

1920 Horace Partridge Catalog